

Innovative  
technology  
for  
**BIOENERGY**



# TRANSFER TRAILER

**ALBACH**<sup>®</sup>

## TRANSFER TRAILER

The transfer trailer offers an efficient and tried-and-tested solution for the transport and the quick and flexible transfer of wood chips and similar bulk materials such as:

- chopped maize silage
- chopped grass silage
- chopped maize straw
- chopped miscanthus (elephant grass)

Thanks to the powerful **hydraulic blower** and high throughput, up to **50 m<sup>3</sup> of material** can be reliably transferred in **just 6 minutes**. This allows the material to be blown directly into lorries or straight into the hoppers of combined heat and power plants – without any additional handling processes.



Rear flap can be opened for maintenance

The transfer trailer is **all-terrain and robustly** constructed and can be used on unpaved field and forest tracks as well as on roads. This allows the material to be transferred directly from the site to the lorry, significantly shortening transport distances and saving valuable time – even under difficult terrain and weather conditions.

Operation is **simple and user-friendly**. Supported by an efficient, semi-automated control system, a smooth, controlled transfer process is ensured.

Depending on the application requirements, various models and equipment variants are available, so that the transfer trailer can be optimally adapted to individual needs.



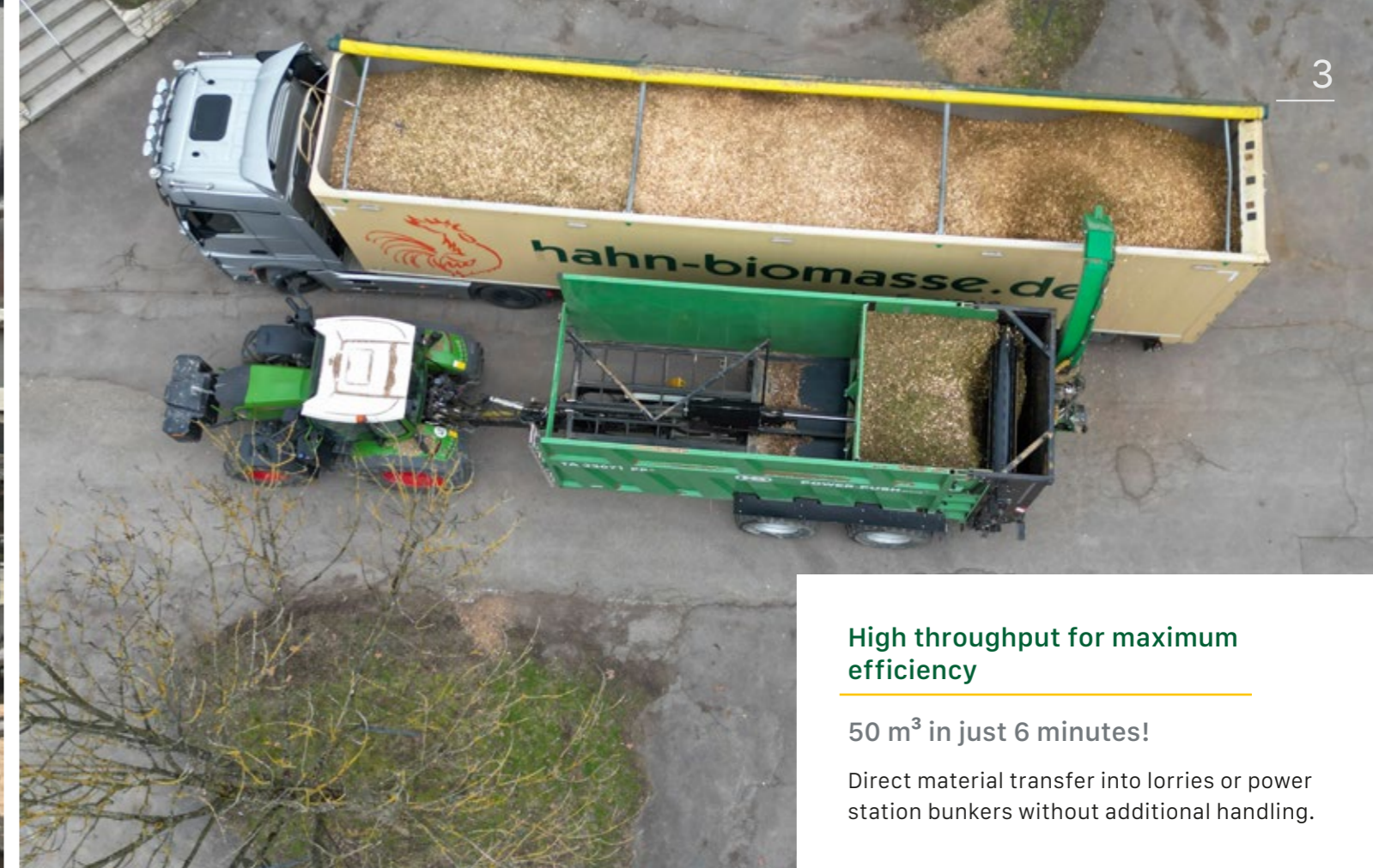
ISOBUS-compatible

### Simple operation from the cab.

- All functions can be controlled centrally via the tractor terminal – simple, clear, efficient.
- AUX-N functions can be assigned to the tractor joystick.

Operation is conveniently carried out directly from the driver's cab. All relevant system and operating pressures are clearly displayed, ensuring constant monitoring of the entire system.

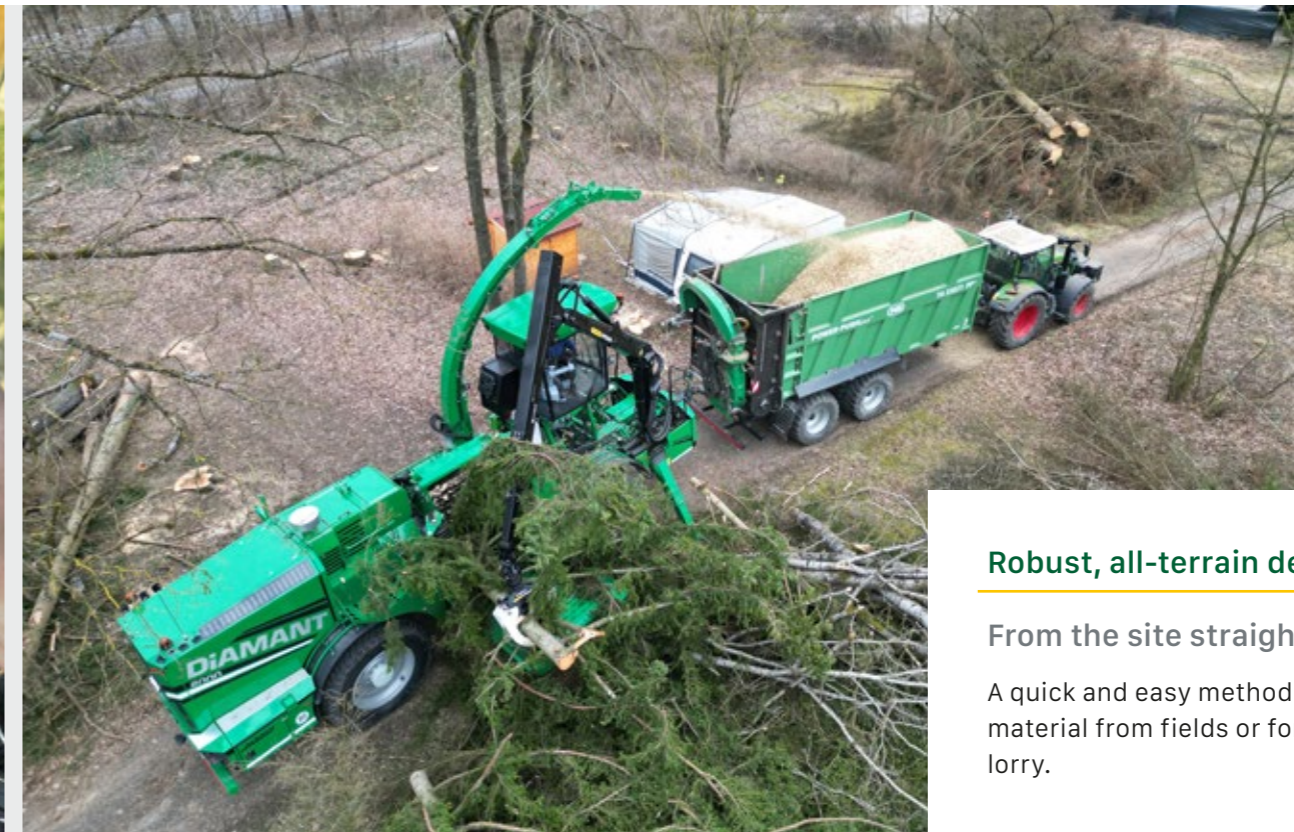
The variable fan speed allows the flow rate to be precisely adjusted to the type of material and operating conditions, thereby contributing to efficient and material-friendly operation.



### High throughput for maximum efficiency

50 m<sup>3</sup> in just 6 minutes!

Direct material transfer into lorries or power station bunkers without additional handling.



### Robust, all-terrain design

From the site straight onto the road.

A quick and easy method for transferring material from fields or forest tracks onto the lorry.

Manufacturer:

**Gebrüder Bachmaier Landmaschinen GmbH**

Schlierstraße 20 • D-85088 Menning

Phone +49 (0)8457 - 93 46 88-0

Fax +49 (0)8457 - 93 46 88-1

info@bachmaier-landtechnik.de

www.bachmaier-landtechnik.de

Sales:

**ALBACH Maschinenbau AG**

Floriansstraße 6 • D-84085 Langquaid

Phone +49 (0)9452 - 93393-0

Fax +49 (0)9452 - 933 93-80

email@albach-maschinenbau.de

www.albach-maschinenbau.de/en

## BLOWER

The blower is designed for high performance, low wear and maximum operational reliability. It is driven by a **high-quality toothed belt drive**, which operates with virtually **no wear** compared to chain drives. All oil-powered engines are consistently operated without chain drives, which significantly reduces maintenance requirements and the risk of breakdowns.

The discharge capacity is **hydraulically adjustable** and can be precisely adapted to different materials and operating conditions. The discharge blade, pipe and flap are made from **high-quality wear-resistant steel**; **high-quality wear plates** are also used, which are **easy to replace**. This ensures a long service life and low overall wear.

### Further features:

- Same blower technology as in the **Diamant Type 1**
- Flap for opening for maintenance and cleaning
- Centralised lubrication points via a lubrication manifold
- Automatic retraction function for the mast
- Saved tower positions for recurring operating situations
- Power requirement for overloading: min. 150 hp



## OPTIONS

A comprehensive range of optional equipment is available for further adaptation to individual operational requirements:

- **Hydraulically folding canopy with overlap** for secure covering of the load
- **Hydraulic support leg** for convenient coupling and uncoupling
- **K80 hitch** for high towing loads and safe road use
- **High-quality powder coating** for long-lasting corrosion protection and a high-quality finish
- **Radio remote control**, allowing the lorry driver to control the loading or transfer process independently
- **Automatic discharge system** for even and controlled unloading of the material



## TYRES AND DIMENSIONS

**Various tyre options** are available for different operating conditions, enabling optimal adaptation to terrain, road use and load capacity.

The **overall width** is – depending on the tyres selected – **2.55 m, 2.75 m or 3.00 m**.

The **body width** is **2.55 m**, thereby meeting standard transport requirements.

## THE RIGHT TRAILER FOR EVERY NEED



### ALBACH® transfer trailer TR 34090 PP+

#### Technical data (approx.):

Unladen weight (kg)	14880
Gross weight (kg)	34000
Towbar load (kg)	4000
Internal body dimensions (mm)	9000 x 2380
Internal body height (mm)	2000
Load volume/incl. loading cone (m <sup>3</sup> )	2000 mm = 43 m <sup>3</sup> 2300 mm = 49 m <sup>3</sup>
Overall length (mm)	11200
Platform height (mm)	1550
Hitch height (mm)	430 - 740
Track width (mm)	2225
Required oil capacity (l)	35
Conveying capacity (m <sup>3</sup> /h) (bulk wood chips)	250
Hydraulic oil	HVLP46
Hydraulic oil capacity (litres)	200
Hydraulic pressures, on-board hydraulics:	
Throw accelerator and cross-screw (bar)	350
Working hydraulics, towing vehicle (bar)	180/200
Operation	ISOBUS VT kompatibel

### ALBACH® transfer trailer TA 24080 PP+

#### Technical data (approx.):

Unladen weight (kg)	13100
Gross weight (kg)	24000
Towbar load (kg)	4000
Internal body dimensions (mm)	8000 x 2380
Internal body height (mm)	2000
Load volume/incl. loading cone (m <sup>3</sup> )	2000 mm = 38 m <sup>3</sup> 2300 mm = 44 m <sup>3</sup>
Overall length (mm)	10060
Platform height (mm)	1550
Hitch height (mm)	430 - 740
Track width (mm)	2225
Required oil capacity (l)	26
Conveying capacity (m <sup>3</sup> /h) (bulk wood chips)	250
Hydraulic oil	HVLP46
Hydraulic oil capacity (litres)	200
Hydraulic pressures, on-board hydraulics:	
Throw accelerator and cross-screw (bar)	350
Working hydraulics, towing vehicle (bar)	180/200
Operation	ISOBUS VT kompatibel

### ALBACH® transfer trailer TA 23071 PP+

#### Technical data (approx.):

Unladen weight (kg)	11000
Gross weight (kg)	20500 - 24000
Towbar load (kg)	2500 - 4000
Internal body dimensions (mm)	7100 x 2380
Internal body height (mm)	2000
Load volume/incl. loading cone (m <sup>3</sup> )	2000 mm = 34 m <sup>3</sup> 2300 mm = 40 m <sup>3</sup>
Overall length (mm)	9160
Platform height (mm)	1550
Hitch height (mm)	410 - 690
Track width (mm)	2225, optional 2000
Required oil capacity (l)	22
Conveying capacity (m <sup>3</sup> /h) (bulk wood chips)	250
Hydraulic oil	HVLP46
Hydraulic oil capacity (litres)	200
Hydraulic pressures, on-board hydraulics:	
Throw accelerator and cross-screw (bar)	350
Working hydraulics, towing vehicle (bar)	180/200
Operation	ISOBUS VT kompatibel



The trailer series is available in various size and volume classes and covers a wide range of applications. Selecting the optimal model allows for precise adaptation to the type of application, cargo and logistical requirements.

The proven Brandtner base chassis with a push-off system serves as the foundation, designed for high payloads, continuous loads and professional, long-term use.

The following chassis and steering variants are available to adapt to different driving and operating conditions:

- Leaf spring suspension (standard)
- Air suspension (optional)
- Hydraulic suspension (optional)
- Trailing steering axles (optional)
- Electric forced steering (optional)
- Hydraulic-mechanical forced steering (optional)

These configuration options ensure optimised handling characteristics, high directional stability and reduced stress on tyres and components during on-road and off-road operation.

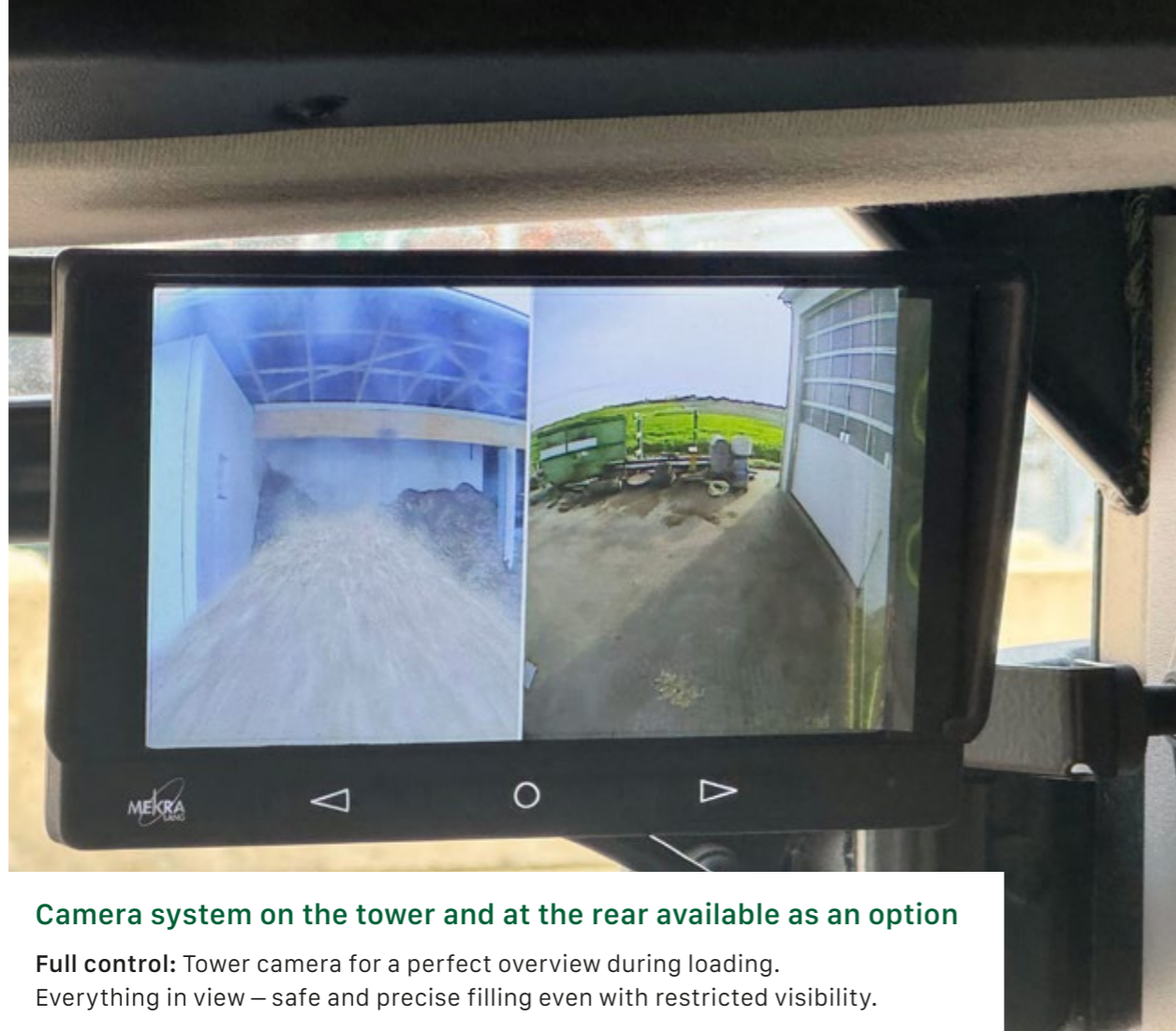
## Highlights

**Brantner quality**

**Can be converted back at any time**

**From specialist to standard trailer**

Flexibility for every season – convertible.



### Camera system on the tower and at the rear available as an option

**Full control:** Tower camera for a perfect overview during loading. Everything in view – safe and precise filling even with restricted visibility.

### Hydraulic blower with PTO pump

Robust, powerful and reliable – for a consistent flow of material even in difficult conditions.



### Fully automatic overloading

Automatic transfer system with metering unit and push wall adjustment.

Optimal control for consistent filling – reduces losses, saves time.

**No wheel loader required.** Direct transshipment saves on machinery and labour.

Reduced machinery requirements, greater efficiency – with just one system.

- Durable thanks to high-quality wear-resistant steel
- Replaceable wear plates
- Extremely durable – and easily replaceable if necessary



### Direct filling of lorry trailers or CHP plant hoppers

- Flexible material discharge for any location
- Clean spreading on sensitive surfaces – precise and controlled



### Extremely easy loading

Loading is particularly simple and efficient. Thanks to the **sturdy outer walls** and the **robust, self-supporting structure**, **no tension rods or tension chains are required**, which speeds up the loading process and significantly reduces the amount of work involved.

### Wear parts

The **feed screw**, the **metering roller** and the high-quality **sealing steel strips** are designed as **replaceable components**. This enables easy maintenance, reduces downtime and contributes to long-term operational reliability.



### LED lighting

The powerful **LED lighting** ensures optimum visibility and high safety both during daily work and at night or in poor visibility conditions. All lights are designed for heavy-duty use and are characterised by a long service life.

- **LED work lights** for optimum illumination of the working area
- **LED spotlights on the mast** for targeted illumination during transfer operations
- **LED rear lights**

Innovative  
technology  
for  
**BIOENERGY**

## ALBACH Maschinenbau AG

Management || Headquarters ||  
Accounting || Development

Schlierstr. 20

D - 85088 Menning

Phone: +49 (0)8457 - 93 46 88-0

[email@albach-maschinenbau.de](mailto:email@albach-maschinenbau.de)

Production || Service ||  
Parts supply || Spare parts

Floriansstr. 6

D - 84085 Langquaid

Phone: +49 (0)9452 - 933 93-0

[email@albach-maschinenbau.de](mailto:email@albach-maschinenbau.de)

As of 06/2026

**ALBACH**<sup>®</sup>