



FÄLLBACH

The most powerful
felling crane



FÄLLBACH

The **FÄLLBACH** was developed as an overall concept especially for felling operations. The interaction between safety, high load capacities and easy handling is unique in this class.

The **FÄLLBACH** meets the individual requirements of felling operations every day in practical use.

With its truck-compliant 80 km/h approval and a turning radius of 8.4 meters, the telescopic crane gets you to any job site quickly and easily. Almost no set-up time, prop up and the felling crane is ready for action.

A tilting upper cabin with good all-round visibility and optional gold foil, comes standard with a comfort seat including seat heating. The step, for safe ascent, can be retracted and extended electrically.

In addition, the driver is assisted by a grab camera system. The HD wide-angle cameras are protected by maintenance-friendly polycarbonate screens.

The grapple itself offers a secure hold with high holding force due to its special grapple and tooth geometry, twisting or even tilting of the log is not possible.

Equipped with a powerful chain saw (100HP), speedy cuts even through 75cm thick logs are no problem. Optionally, the saw can be equipped with 0.404" or 3/4" pitch, so that the right chain can be selected for every application. In order to be able to use the saw unit appropriately for the application, functions such as a cut limiter or a reverse cut are also possible in addition to the monitoring devices.

The new 5-section boom allows a working height of up to 30 meters. The option of working 50° downhill is still available.

Another highlight is the mechanical quick coupler, with hydraulic multi-coupler and electrical connection, making the **FÄLLBACH** a multifunctional machine.



The operator is actively supported in his work by information.

For example, the log diameter is output via the gripper position, which in turn can limit the saw blade angle. At the same time, the gripper pressure is monitored, so that automatic repressing can be triggered if clamping force is lost.



**Efficient
working –
maximum
range**



Efficient and safe on the job site

High speed during the working process due to fast telescopic extension and retraction.

Anticipatory electronic load-sensing control with generous hose cross-section for efficient power transmission.

Complete protection via load holding valves.



Interior view of crane cab



Gold foil of crane cabin



Eddy-current brake



Customized cylinders and chain hoists ensure high speeds and load cycles. Thanks to the use of high-strength fine-grain structural steels and a special geometry, the telescoping system achieves maximum bending and torsional rigidity. In addition to central lubrication, all sliding linings in the telescope, from the outside, have a lubrication connection.



Efficient work – in confined space



Use in confined spaces

The **FÄLLBACH** offers the possibility to turn the upper carriage within the vehicle width. It is also possible to support it within the width of the vehicle. This allows an application e.g. at walls of houses, driveways or on closed carriageways is no problem.

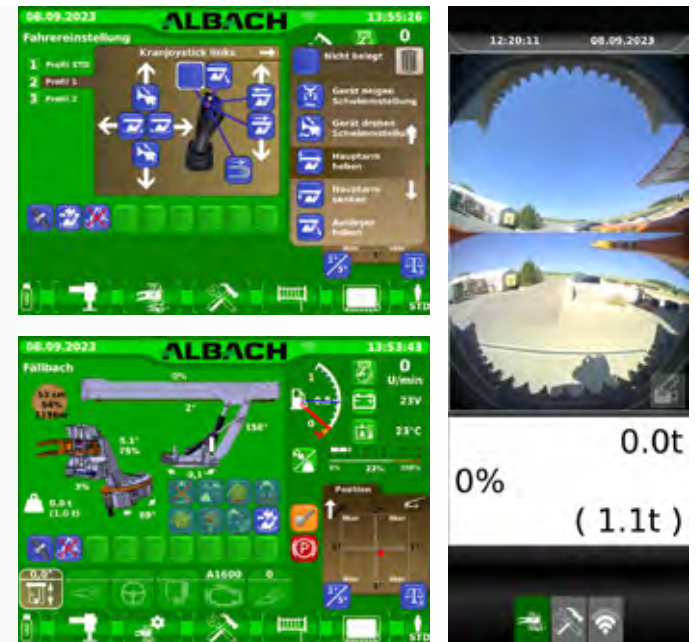


THE SYSTEM SOLUTION FROM FÄLLBACH

Driver display for control and joystick settings, output of all working parameters to engine and drive diagnostics.

With the **FÄLLBACH Touch Screen Terminal**, you can easily control all functions and adapt the machine to your individual needs.

Working parameters and joystick functions can be set conveniently from the operator's seat and saved in two different operator profiles.



TECHNICAL DATA

Chassis

GROVE GMK 3060 3-axle with 4-point support

Dimensions

Length	m	10,75
Width	m	2,55 - 2,85 m (depending on tires)
Height	m	3,98
Speed	km/h	80
Weight	t	30 - 36 (depending on equipment)

Superstructure:

- 360° endless rotatable
- Hoisting winch
- Hydraulic quick coupler on the telescopic tip

3-section telescope

Extension and retraction speed of attachment: approx. 0,75m/s

Extension and retraction time to max. reach: 15sec.

5-section telescope

Extension and retraction speed of attachment: approx. 1m/s

Extension and retraction time to max. reach: 20sec.

Precipitation unit:

Max. Grapple opening: 1,05m

360° endless rotatable

Max. Rotating or holding torque of slewing ring: 49kNm

Max. lifting moment of the gripper: approx. 80kNm

Clamping force gripper tip-tip 60kN (6Tons)

All functions secured with load holding valves (lowering brakes)

Safety:

Dynamic load table depending on the

- Support base
- Alignment to the undercarriage
- Extension of the telescope with output of theoretical max. load capacity

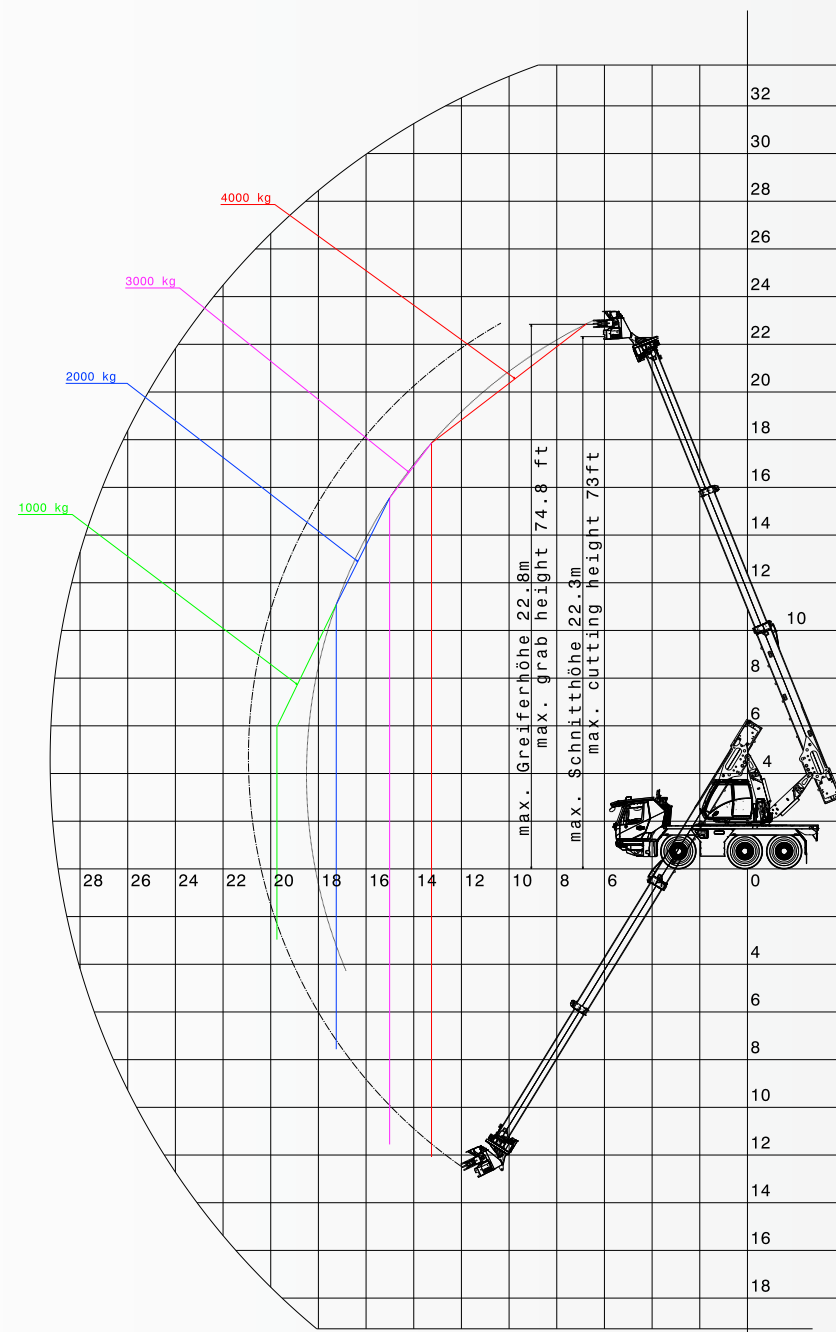
Display of the actual weight in the grapple or winch.

All functions protected with load holding valves.

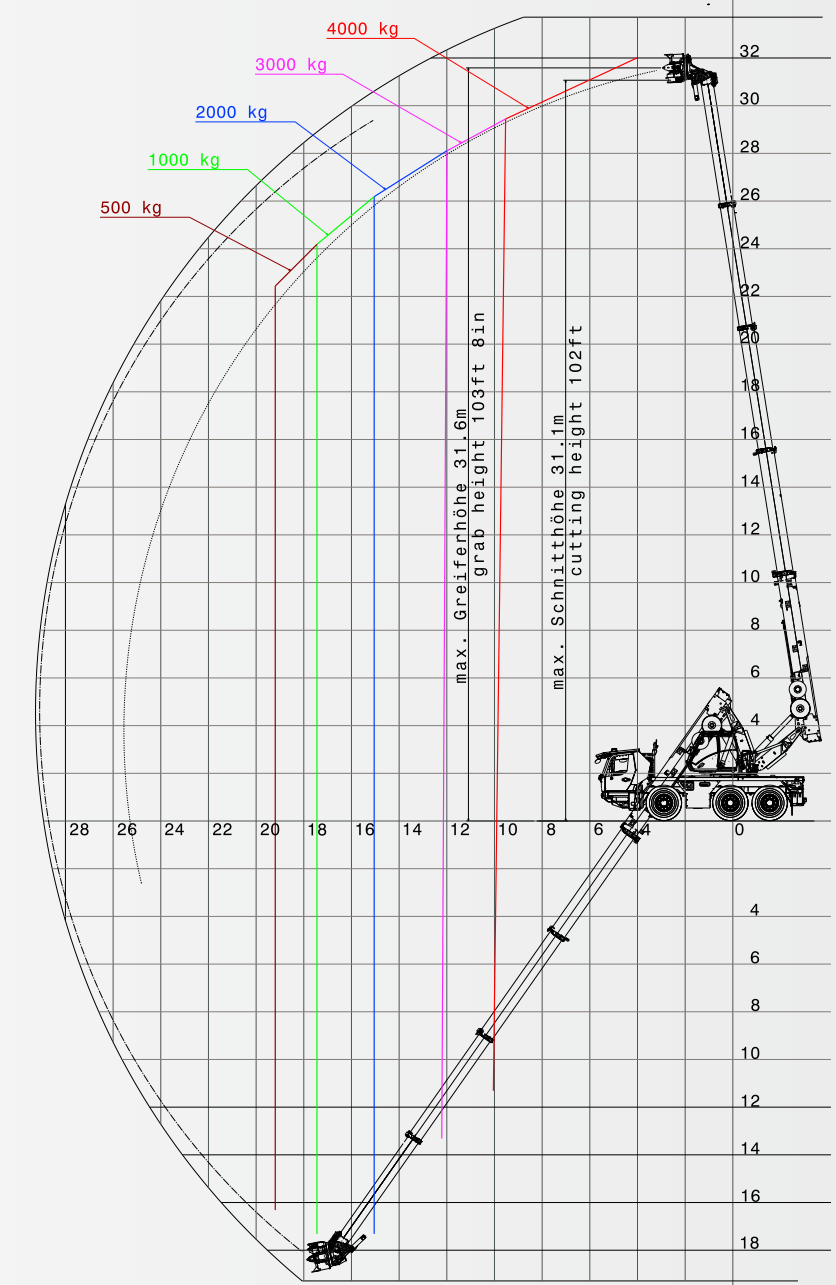
Hose/line damage does not cause lowering of the load.



- 80 km/h highway approval
- Great maneuverability due to all-wheel steering
- Working cab can be tilted by 20°
- Max. Lifting force 39kN (4 tons)
- 1,05m grab opening
- Saw bar length 90cm
- Saw chain type 0.404" or 3/4"
- Saw motor power 75kW (≈100HP)



vorläufig / preliminary



Gebrüder Bachmaier Landmaschinen GmbH

Schlierstr. 20

D-85088 Menning

Phone: +49 (0)8457 - 93 46 88-0

E-Mail: bachmaier-menning@t-online.de

FÄLLBACH