

Innovative  
technology  
for  
**BIOENERGY**



# **DiAMANT 2000**

The most powerful  
Allroad self-propelled

**ALBACH**





## 2006

### Milestone

In order to achieve the hacker concept „self-driving and powerful“, the **ALBACH** Maschinenbau GmbH & Co. KG was founded in Menning.

Construction of the first prototype and testing phase.



## 2008

### Presentation Silvator 2000

2008 the serial production started and the first **Silvator 2000** was presented to the public.

With a transport width of 3 m and a specially built crane, the machine was up to 50 km/h fast.



## 2008 - 2014

### Evolution

In the following years the **Silvator** was constantly developed and sold in more than 15 countries worldwide.



## 2013

### Shrub press

In 2013 the first **mobile shrub press** was developed and completed.

## 2014

### DIAMANT 2000

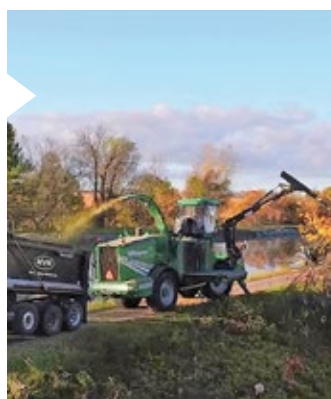
The wood industry demands even more mobility. **ALBACH** presents the new **Diamant 2000** with truck-typical dimensions, a new drive and rotor concept and a maximum speed of 70 km/h.



## 2015

### Expansion

For the first time, the **Diamant 2000** is also sold in North America.



## 2015 - 2018

### New production facility

Due to the enormous increase in demand for the **Diamant 2000**, a new production site in Langquaid is established.



## 2018

### FÄLLBACH – the mobile felling crane

In 2018 the first newly designed felling cranes **FÄLLBACH** have been delivered to Northern Germany and to the USA.



## 2019

### Highway approval

Presentation of the **Diamant 2000** 80 km/h version.



## 2021

### Anniversary

The 500th machine **Diamant 2000** is delivered.



# DIAMANT 2000





# DiAMANT 2000

convinces with the best wood chip quality, which has been combined in the overall concept with **off-road capability** and **durability**.

These requirements, which are set by the market together with self-feeding, are met by the **Diament 2000** every day in practical use.

With its highway approval and its maximum speed of 80 km/h the self-propelled all-road vehicle takes you uncomplicated to any place of operation.



## Technical data

### Dimensions

Length	m	10.34
Width	m	2.55
Height (raised cabin)	m	3.95 (4.80 eye level)
Speed	km/h	80
Tires	Type	645/65R 42



**Efficient  
work –  
maximum  
range**



Even the heaviest trailer loads do not bring the **Diament 2000** to its limits. Individual **crab steering** or **all-wheel steering** enable you to operate in the most confined spaces.



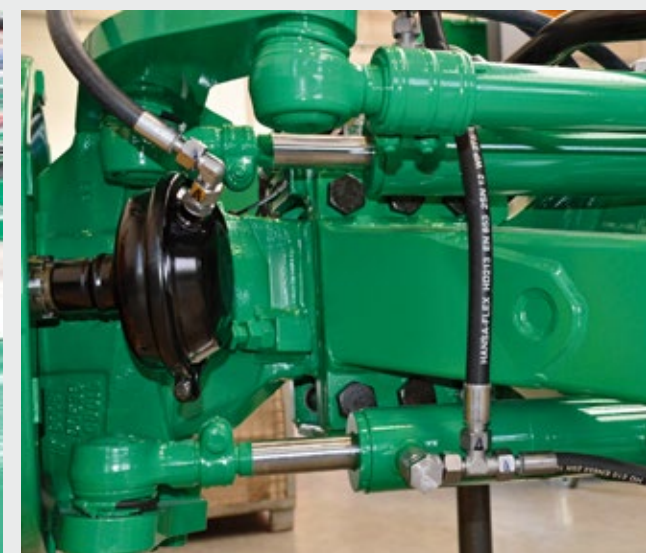
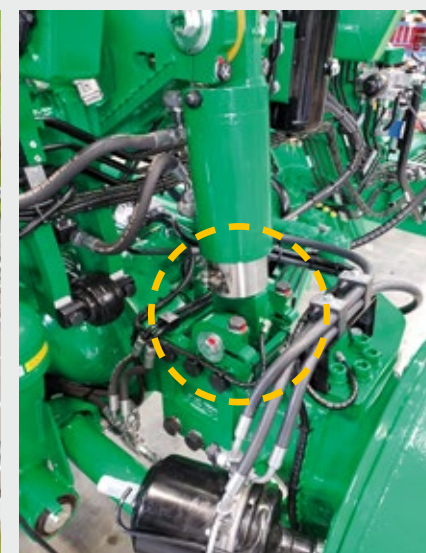
Thanks to the **permanent all-wheel drive system** with independent hydromechanical drive on each axle, it is easy to master hill climbs in rough terrain.



## Highway approval

## Axle suspension

## Steering





## CABINE AND TERMINAL

### Perfect workplace for the operator

4.8 m eye height guarantees **perfect and safe all-round visibility** even with high wood piles. This means that you can see your field of vision at all times.

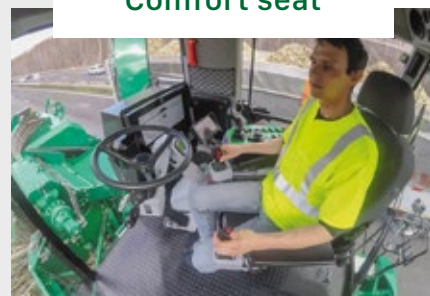
The combination of sound-insulated and air-suspended cab with comfort seat, air conditioning and heating allows **fatigue-free work** even on long working days.

For even more comfort, a refrigerator and microwave are optionally available.



Underfloor heating

Comfort seat



Air suspension

## THE SYSTEM SOLUTION FROM ALBACH

Driver display for control and joystick-settings up to engine and drive diagnostics.

With the **ALBACH Touch Screen Terminal** you can easily control all functions and adapt the machine to your individual needs.

Working parameters and joystick functions can be conveniently set from the driver's seat and saved in a maximum of three different operator profiles.



Export of all work orders and creation of further driver profiles via USB interface.



Diagnosis made easy: All information about controller and PIN assignment are printed on the cables.



## CHIPPING UNIT

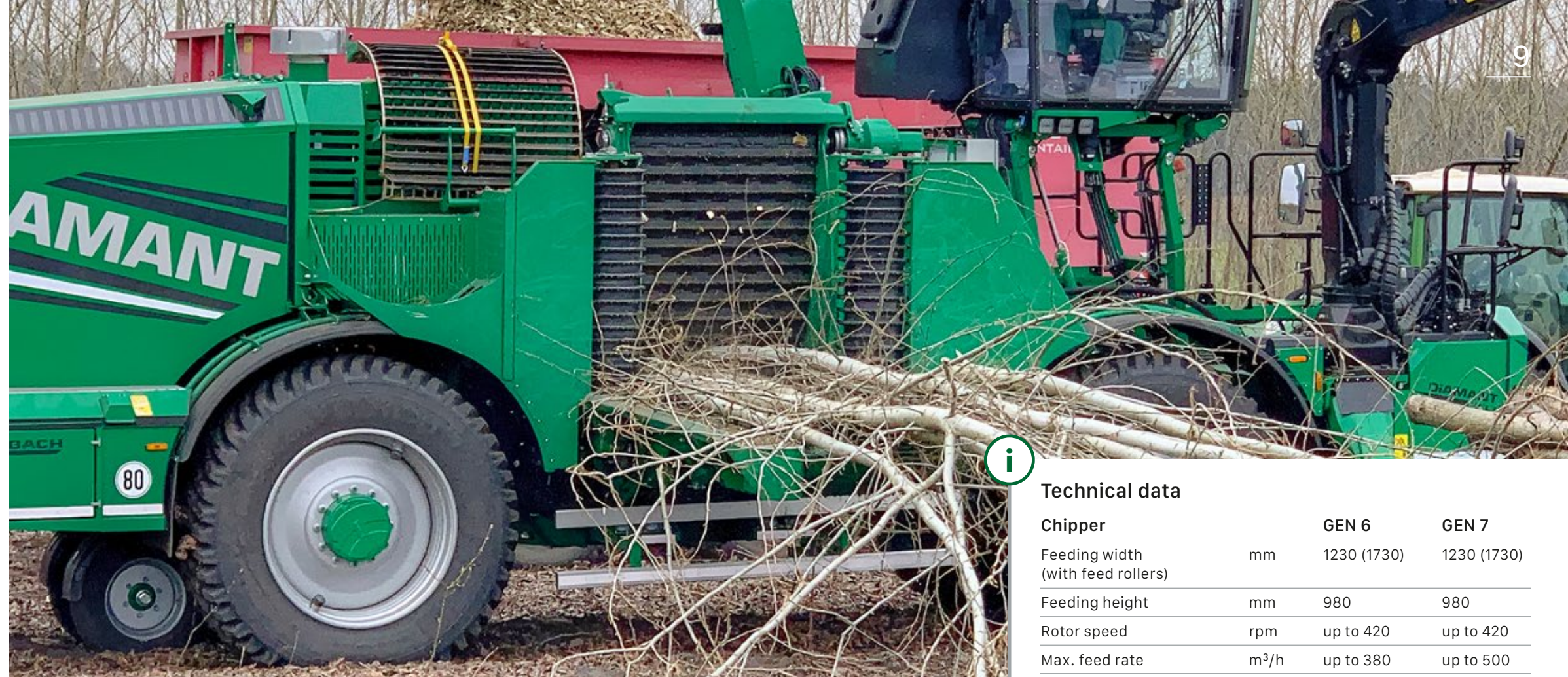
### Quality that pays off

Chipping unit with vertical infeed belt, direct drive for infeed chain and infeed roller.

Laterally arranged infeed rollers guarantee a trouble-free infeed, e.g. when chipping complete trees and branches.

The augers in the discharge floor are all driven driven by specially mounted oil motors.

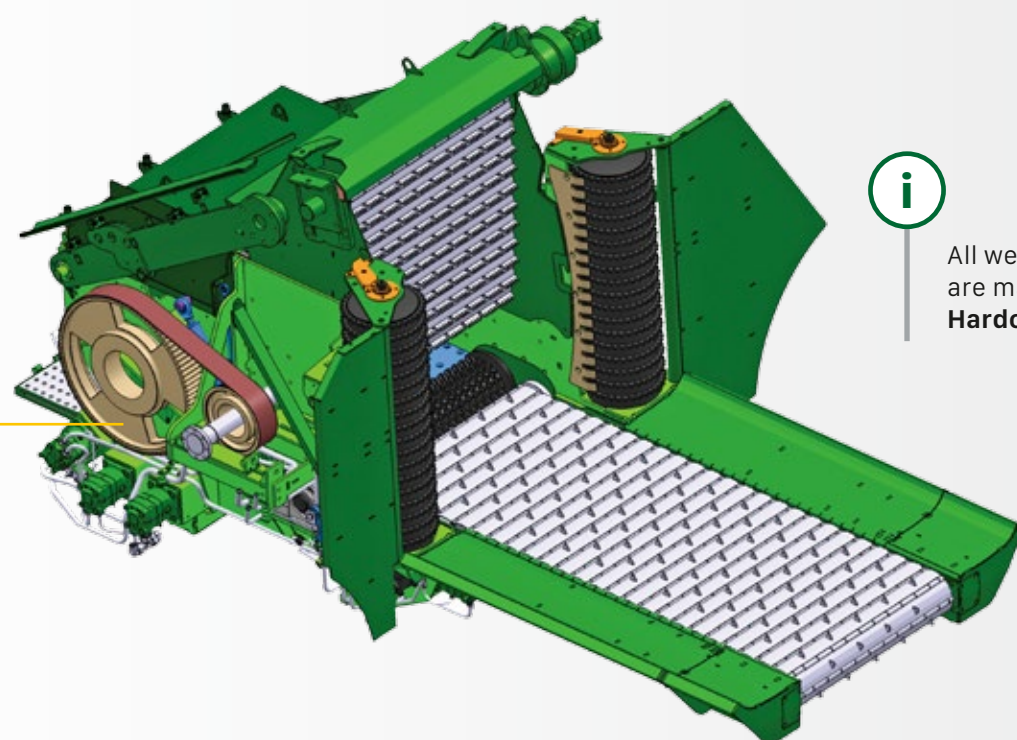
The Diamant has a **unique guarding system** to protect the rotor against foreign material. If the counter-blade is triggered by a sensor, the rotor clutch and infeed are switched off within a fraction of a second.



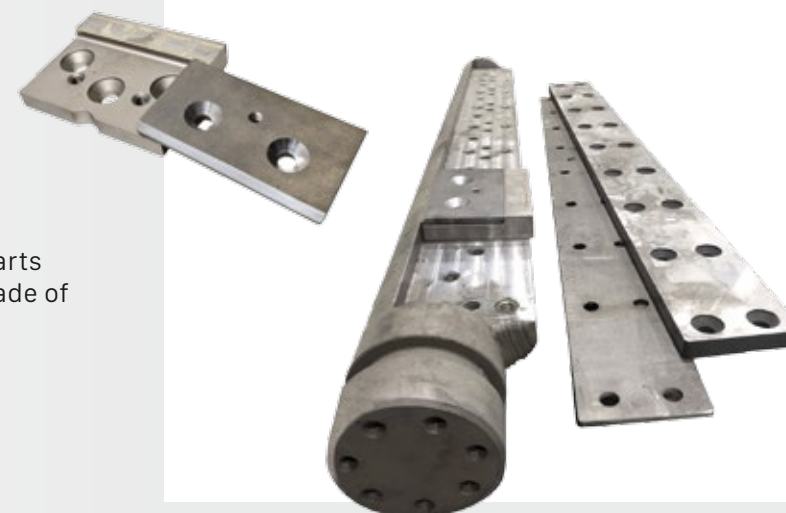
### Technical data

Chipper		GEN 6	GEN 7
Feeding width (with feed rollers)	mm	1230 (1730)	1230 (1730)
Feeding height	mm	980	980
Rotor speed	rpm	up to 420	up to 420
Max. feed rate	m³/h	up to 380	up to 500
Feeding speed		material-dependent 3-step control variable	
Rotor diameter	mm	1040	1040
Number of knives	pcs.	6 (optional 12)	6
Rotor drive		mechanical	mechanical
Accelerator drive		hydraulic – variable adjustable	
Counter blade		2-sided insert / single elements	
Distance counter blade - knife		variable	
Protection counter blade		hydraulic overload protection	
Direction of rotation feed		reversible	

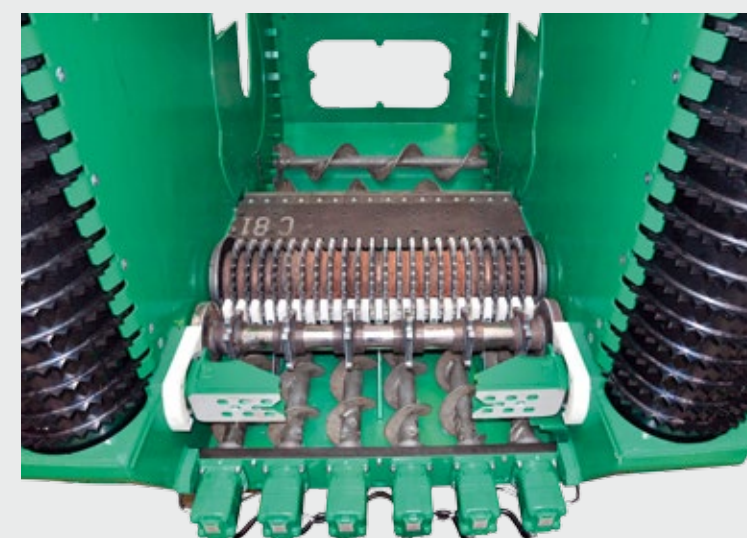
### Mechanical rotor drive



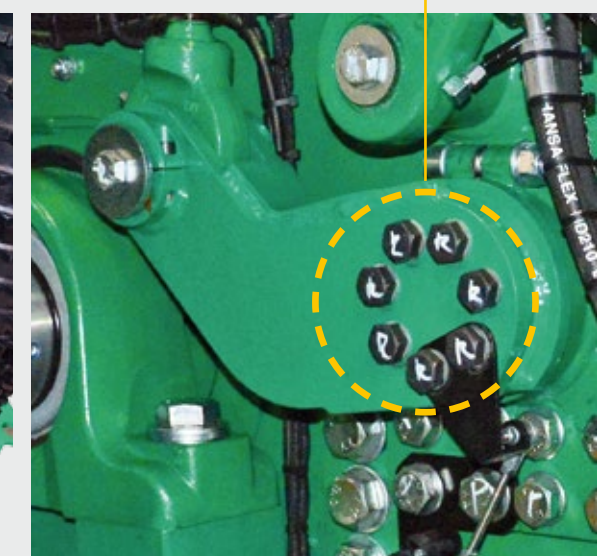
All wearing parts are mainly made of **Hardox**.



### Trouble-free feeding



### Shear bolts



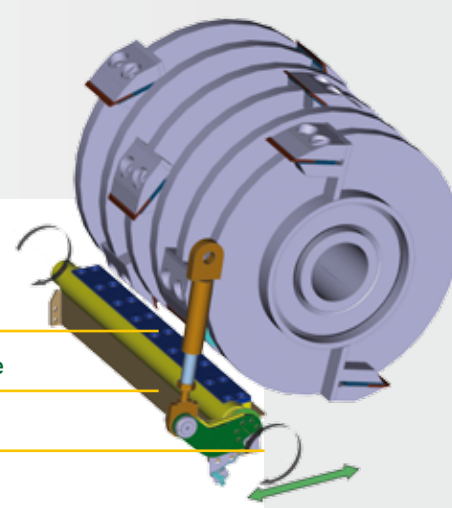
To protect the rotor and rotor shaft from damage in a controlled manner, additional predetermined breaking points are installed.

Interchangeable counterblade

Hydraulically preloaded counterblade

Rotatable counterblade

Variably adjustable





## ROTOR

### For optimum wood chip quality

Thanks to our rotor concept and flexible configuration options we can respond to a **wide range of customer requirements**.

With the **ALBACH Diamant** it is easy to produce wood chips in all specifications and for all purposes.

### Rotor Generation 6

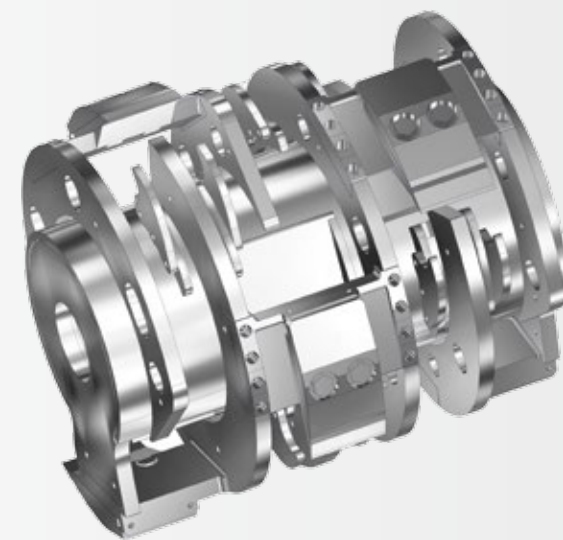
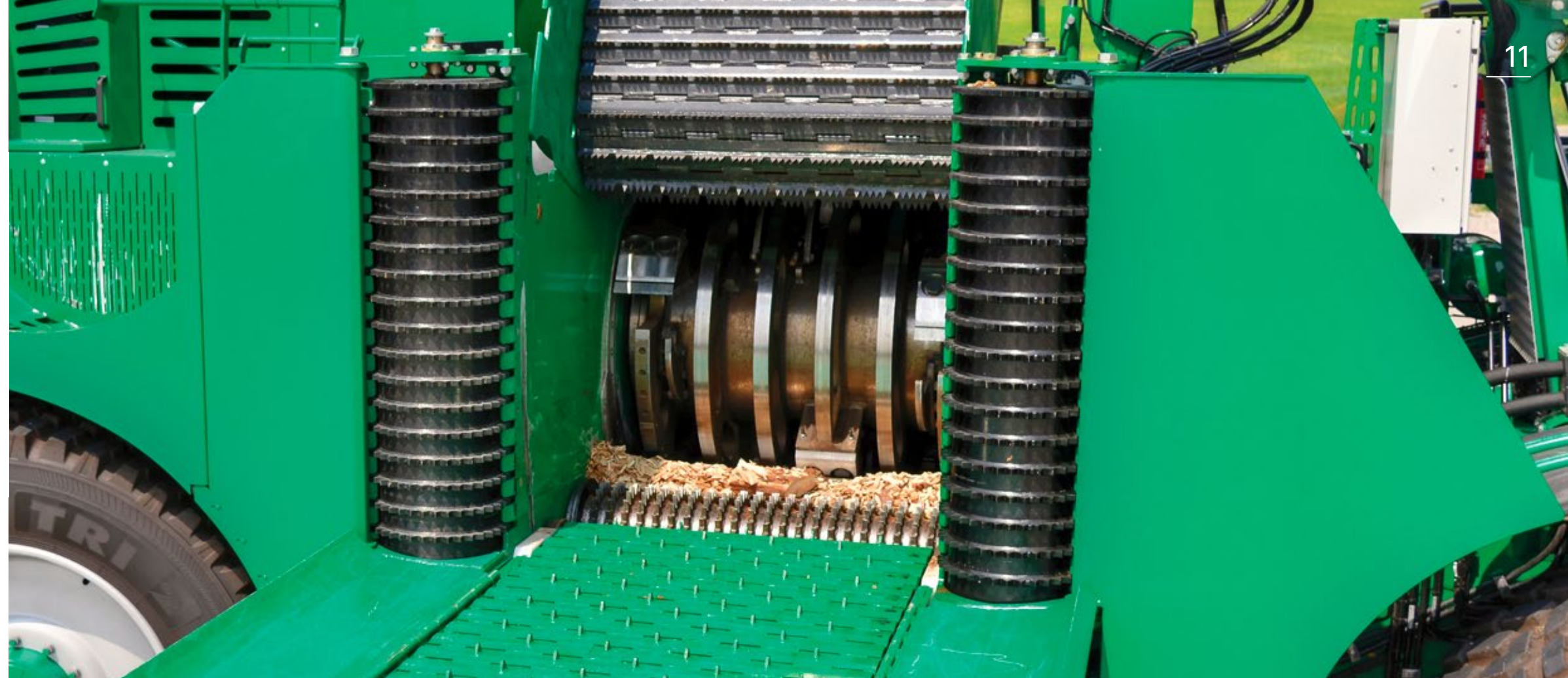
With the Rotor Gen. 6 you have the choice between 6 or optionally 12 knives. With 6 knives you can produce chips from 10 to 40 mm. The exact setting is possible in 2 mm steps.

**Rotor Generation 6** comes with the Gen. 1 accelerator as standard. Optionally the Gen. 2 accelerator is available.

Two different knife variants are available:

- Blades with adapter (quick-change system)
- Knife for universal use (quick-change system)

*\* Optional retrofitting in all Silvator and Diamant is possible.*



### Rotor Generation 7

With **Rotor Generation 7** you can produce wood chips from 15 to 60 mm. The exact adjustment is possible in 2 mm steps.

Interchangeable knife carriers allow optimal adjustment to a wide range of materials, to produce the best possible chopped material and thus ensure corresponding efficiency.

Possible knife variants for Gen. 7:

- Blades with quick-change system
- Blades for cutting lengths up to 38 mm
- Blades for cutting lengths up to 60 mm



Microchip



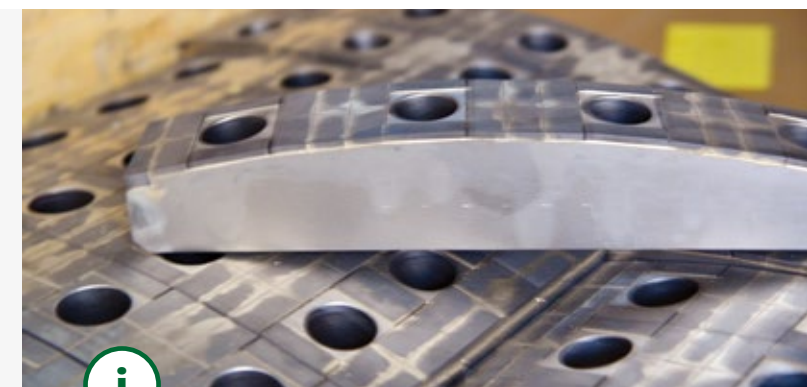
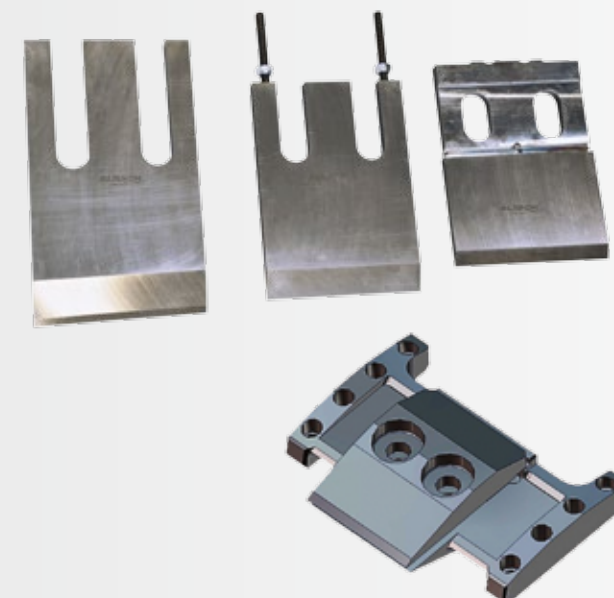
G 30



G 50



G 100



Interchangeable wear plates allow long rotor working time and an optimization of the of the wood chip quality.



ACCELERATOR

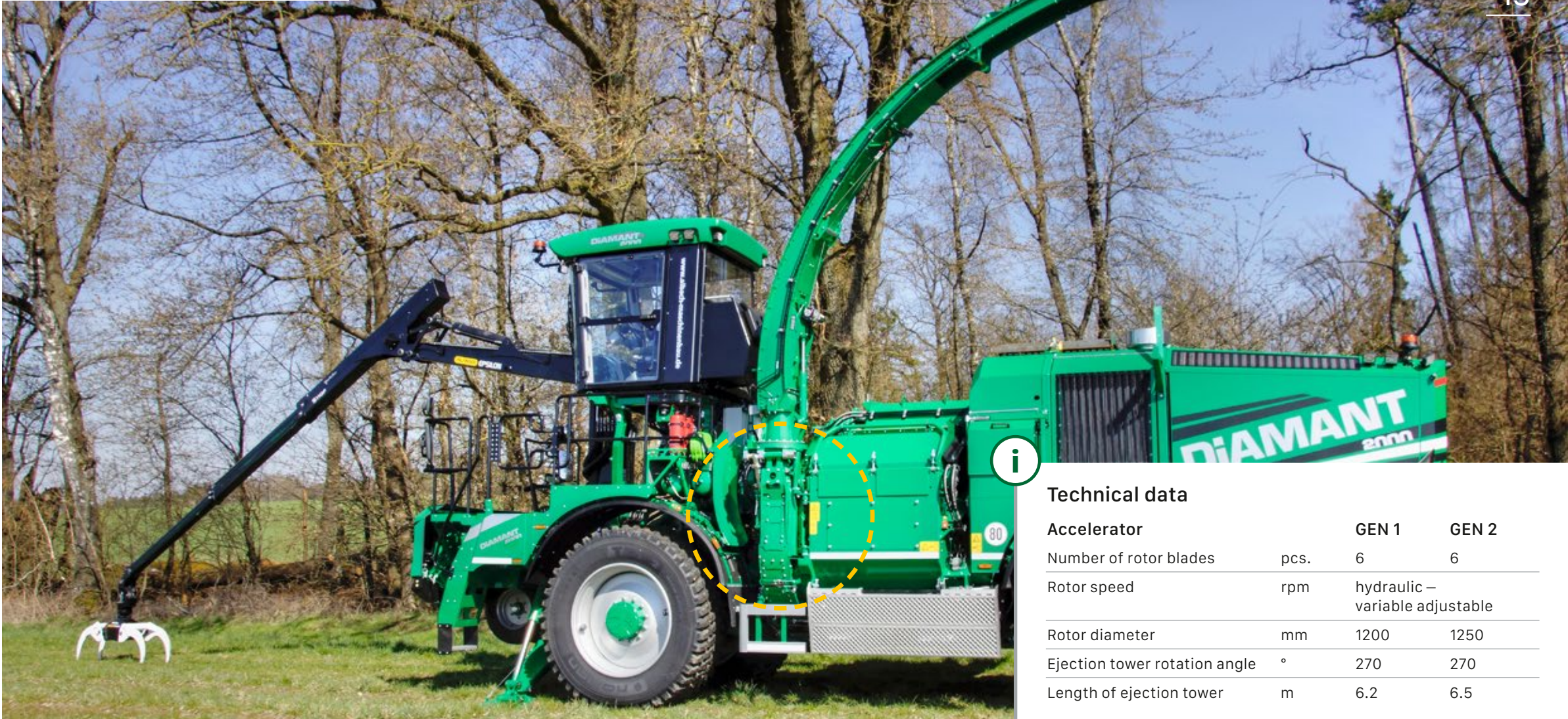
The hydraulically infinitely variable **Generation 1 accelerator** has a high ejection capacity and throwing range. Overloading is possible in all directions. All wearing parts can be replaced in the shortest exchanged in a very short time.

Optionally, the tower can be ordered with a remote control. This allows the driver to fill trailers himself. The chipper driver can concentrate on his work without distraction. Overloading heights of more than six meters are possible without any problems.

With the **Generation 2 accelerator** you get all advantages of the Generation 1 accelerator. In addition by folding out the accelerator makes daily maintenance easier and access for service work.

The Generation 2 accelerator enables highest throughputs due to its direct drive even with the longest cut lengths. Here you can adjust the speed independently hydraulically.

Accelerator Generation 2



Technical data

Accelerator		GEN 1	GEN 2
Number of rotor blades	pcs.	6	6
Rotor speed	rpm	hydraulic – variable adjustable	
Rotor diameter	mm	1200	1250
Ejection tower rotation angle	°	270	270
Length of ejection tower	m	6.2	6.5

Accelerator Generation 1



Gen. 2



Gen. 1



Exchangeable and reversible throwing blades made of Hardox 400

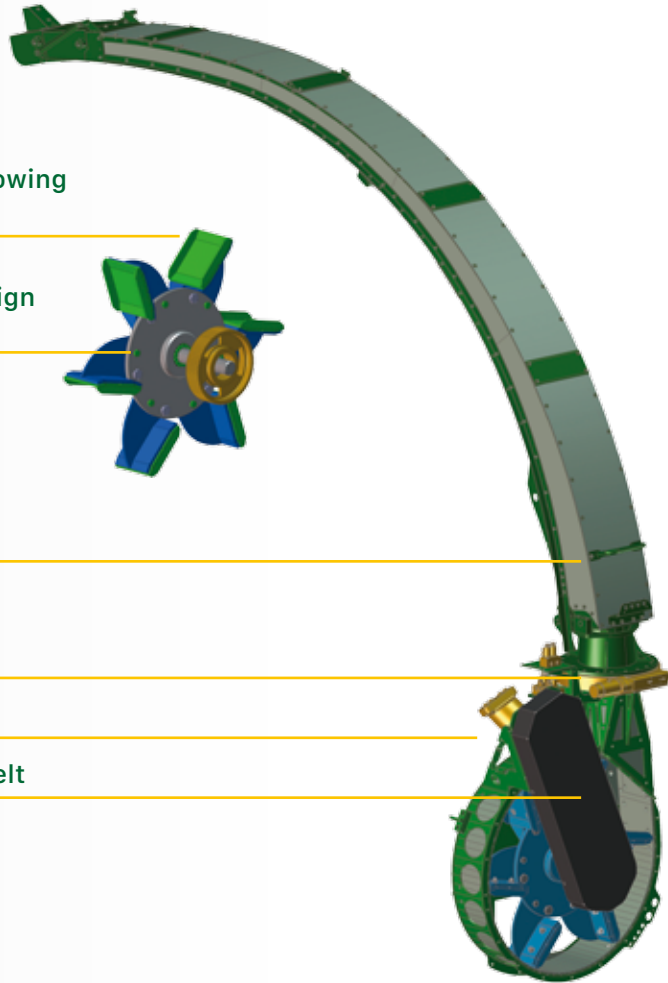
Overload protection against foreign objects

Hardox 400 (gray)

Maintenance-free slewing ring

Hydraulic accelerator drive

Carbon fiber reinforced timing belt





CRANE AND LOAD  
IN ALL DIRECTIONS

More efficiency – less idling

The 240-degree swiveling and height-adjustable tower ensures **easy handling by transporting** the chipping material. The extended angle of rotation of the ejector tower allows almost any positioning of the transport vehicles.

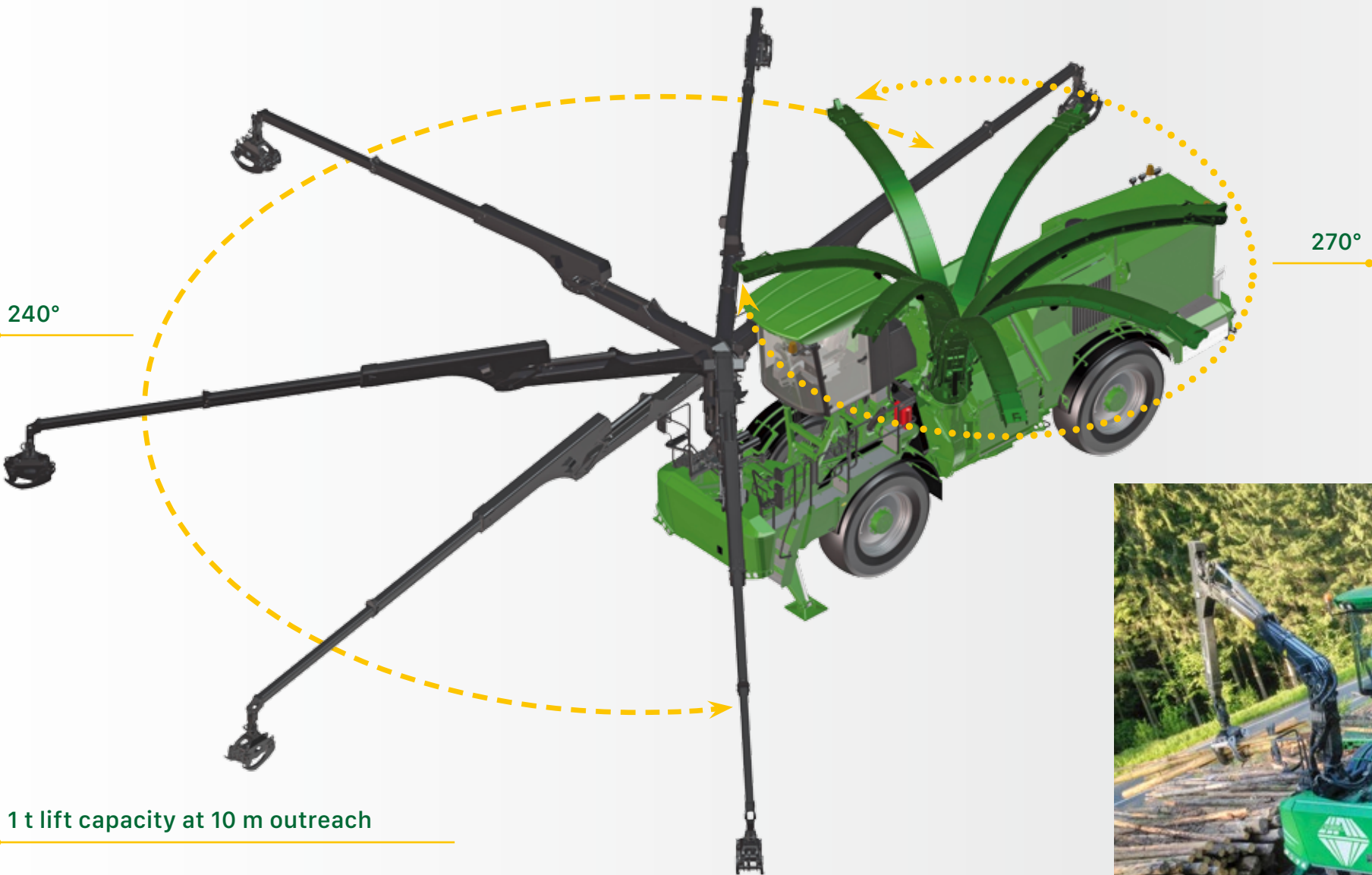
This variety of vehicle positioning allows the simultaneous use of several transport vehicles at the same time. The saving of idle time during maneuvering further increases efficiency during chipping.



Technical data

Crane

Type S110 F, Epsilon / Type 12LF10,30 Penz		
Max. Reach	m	10.1
Loads at 10,1 m	t	1
Crane throughput (1600 rpm)	l/min	200



1 t lift capacity at 10 m outreach



ENGINE

Volvo or MAN engine with 16.1/16.2-liter displacement – 3 options

Highest power and torque output already at low engine speeds! The engine variants, combined with the chipping and driving characteristics of the **Diamant 2000**, are an ideal combination for the self-propelled wood chipper.

Transmission and hydraulics are optimally adapted to the torque characteristics of the respective engine to ensure powerful, dynamic and economical operation with sufficient performance with low fuel consumption.

Allocation according to emission levels:

Currently, for new registrations

- in Europe is exhaust stage V (according to Requirement Directive 97/68/EC)
- in the USA Tier4 (according to EPA/CARB)
- rest of countries – country-specific different requirements, mostly based on to Tier V or Tier 4, in some cases even no specific requirement

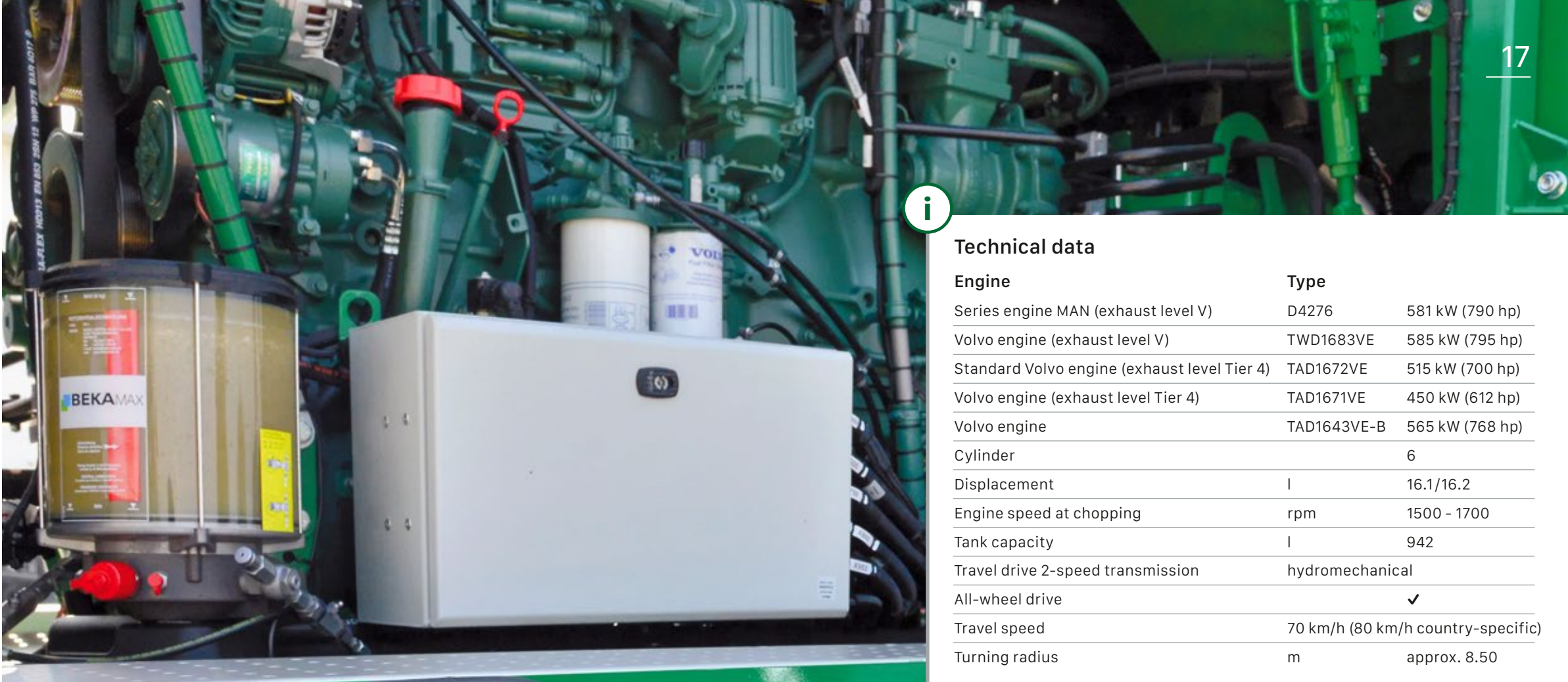
In general, the country-specific availability to be checked.



MAN 6-cylinder in-line engine **581 kW (790 hp)** with 16.2 liters displacement with common rail injection system, AdBlue, SCR catalytic converter and exhaust gas recirculation.



Volvo 6-cylinder in-line engine (Tier 5) **585 kW (795 hp)** with 16.1 liter displacement, pump-nozzle injection, SCR catalytic converter and AdBlue.



Technical data

Engine	Type	
Series engine MAN (exhaust level V)	D4276	581 kW (790 hp)
Volvo engine (exhaust level V)	TWD1683VE	585 kW (795 hp)
Standard Volvo engine (exhaust level Tier 4)	TAD1672VE	515 kW (700 hp)
Volvo engine (exhaust level Tier 4)	TAD1671VE	450 kW (612 hp)
Volvo engine	TAD1643VE-B	565 kW (768 hp)
Cylinder	6	
Displacement	l	16.1/16.2
Engine speed at chopping	rpm	1500 - 1700
Tank capacity	l	942
Travel drive 2-speed transmission	hydromechanical	
All-wheel drive	✓	
Travel speed	70 km/h (80 km/h country-specific)	
Turning radius	m	approx. 8.50

SPLIT COOLING SYSTEM

With the split cooling system of the Diamant 2000 you always keep a cool head.

Hydraulic oil cooler with reversing function

Water, intercooler and air-conditioning cooler are installed in the rear of the chipper.

Automatic reversing function as standard.

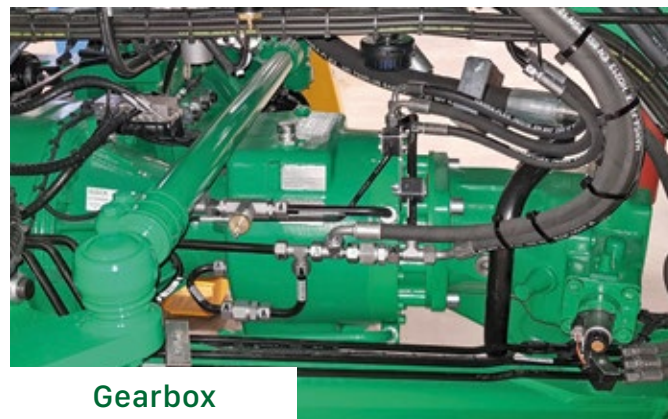






## TRACTION DRIVE

Best driving characteristics – on the road and off-road



Gearbox



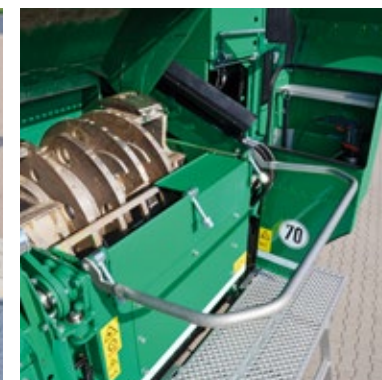
Steering



Axle suspension



## MAINTENANCE AND SERVICE







## TRAINING AND SERVICE PARTS

ALBACH training for drivers and service technicians

For each machine delivered by **ALBACH** we offer a qualified training. This training takes place on the machine and also on the individual components. Our goal is to provide you with the **best know-how**.



### Spare parts supply and availability

Our motto is: **Everything from one source.** Motors, gearboxes and crane parts are directly from **ALBACH**.

We guarantee complete spare parts inventory for service, wear parts and all drive parts including motors.



## OPTIONAL ACCESSORIES



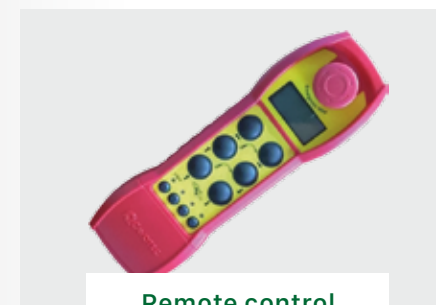
3 drawers



2 drawers and refrigerator compartment



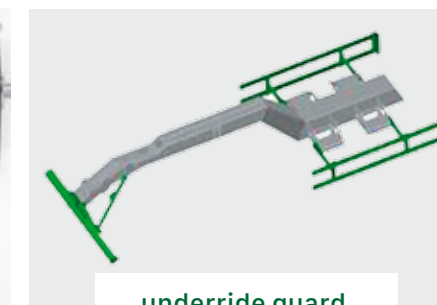
1 drawer, microwave / refrigerator compartment



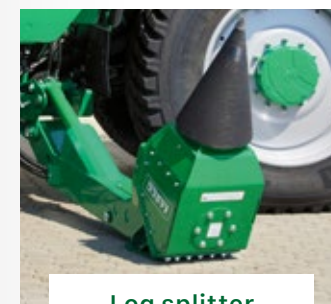
Remote control for tower



Winch



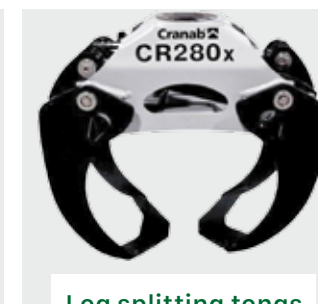
underride guard, country specific



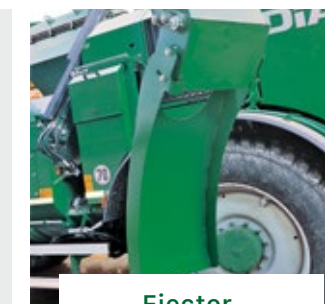
Log splitter



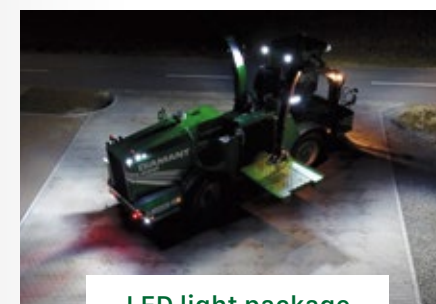
Splitting tongs



Log splitting tongs or finger gripper



Ejector-Reverse flap



LED light package



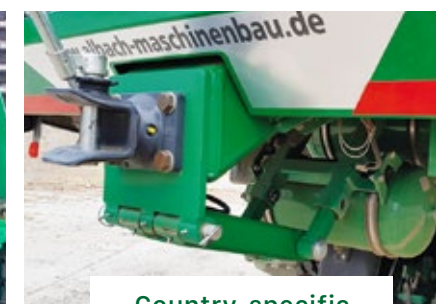
Rear camera/ ejector camera



Parking heater



Sieve holder



Country-specific trailer hitches



Auxiliary batteries



# DiAMANT 2000

## ALBACH

### ARGUMENTS THAT CONVINC

For each machine delivered by **ALBACH**, we offer qualified training. This training is carried out on the machine and also on the individual components. Our goal is to provide you with **the best know-how**.



#### Quality made in Germany

As a premium manufacturer, **ALBACH** focuses on the highest standards – in all areas.

- Design – reliable machines – extremely robust construction as a basis for the future
- High vertical range of manufacture
- High flexibility
- Trained, experienced specialists
- Loading and shipping



#### Contact partners worldwide

In addition to production in Langquaid, the company headquarters are also located in Menning, Upper Bavaria, Germany.

Our international customers have contacts in many countries around the world.



#### Individual solutions

Mechanical engineering belongs to the classical engineering sciences.

In this field, the company **ALBACH** Maschinenbau has specialized in the production and further development of chippers.



#### Comprehensive service

Our know-how – your benefit

- In a personal consultation, we address your individual project requirements
- We advise you on which machine is right for you
- You receive transparent information about the operating and service costs of the machine even before you make your purchase
- With our worldwide sales and service partners, you will find a competent contact person close to you





Innovative  
technology  
for  
**BIOENERGY**

## ALBACH Maschinenbau AG

Management || Headquarters ||  
Accounting || Development

Schlierstr. 20

D - 85088 Menning

Phone: +49 (0)8457 - 93 46 88-0

[email@albach-maschinenbau.de](mailto:email@albach-maschinenbau.de)

Production || Service ||  
Parts supply || Spare parts

Floriansstr. 6

D - 84085 Langquaid

Phone: +49 (0)9452 - 933 93-0

[email@albach-maschinenbau.de](mailto:email@albach-maschinenbau.de)

**ALBACH**